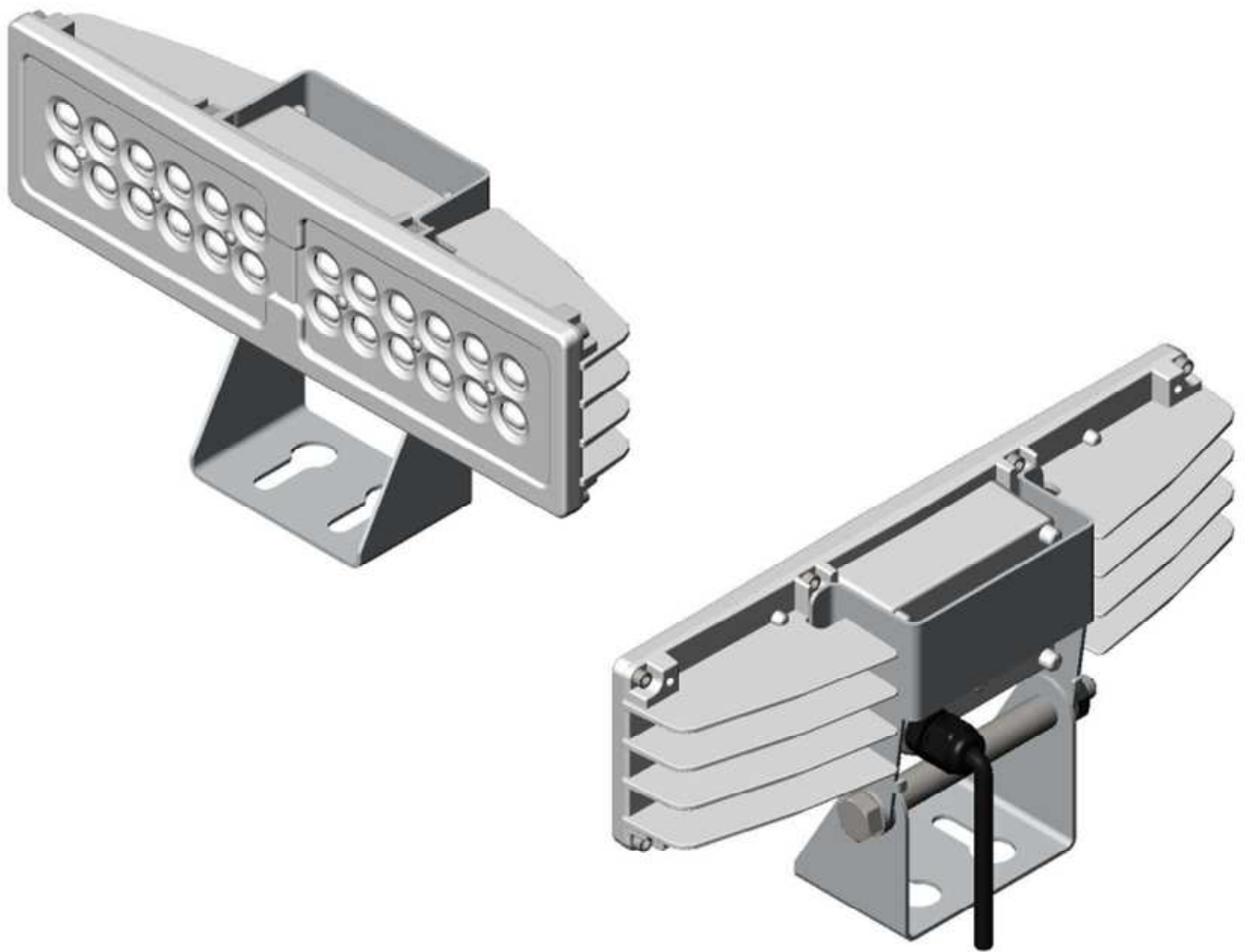


SPECIFICATION

1/7

IP65 Modularized Flood Light DATA SHEET



Alliance Optotek Corp.

No.5,Lane 191,Chung-Ho St.,Chupei City Hsinchu 30267,Taiwan

Tel : 889-3-5551100 Fax : 886-3-5555050

<http://www.aoptk.com/>

SPECIFICATION

2/7

1. Applications:

1.1 Area: Outdoor / Indoor

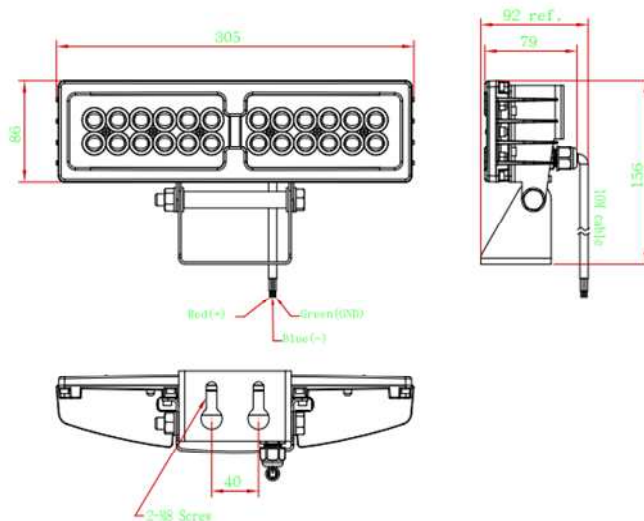
1.2 Purpose: Lighting for yard, stage, parking space ,warehouse, emergency and safety.

1.3 Feature: The product meets IP65 dustproof and waterproof standard and is light, it can provide abundant and stable luminous flux with a powerful Illuminant engine, and is very suitable for all kinds of outdoor floodlighting.

The features of saving power, long lasting illuminant and instant illuminating make it the best replacement of traditional floodlighting.

2. Specification:

2.1 Outline dimension:



2.2 Fixture material: Aluminum alloy

2.3 Weight: 2.12kg

2.4 Water proof gard: IP65

2.5 Operation temperature: -30°C ~ 50°C

2.6 Storage temperature: -30°C ~ 80°C

2.7 Safety certificate: CE

SPECIFICATION

3/7

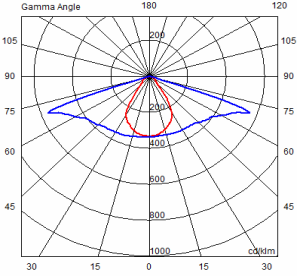
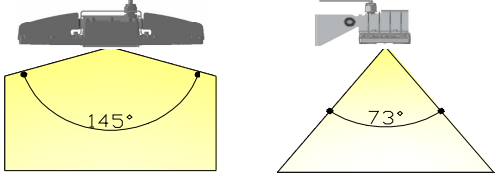
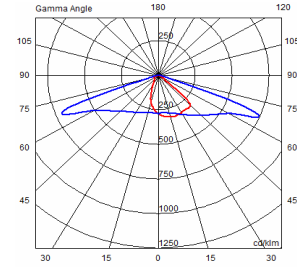
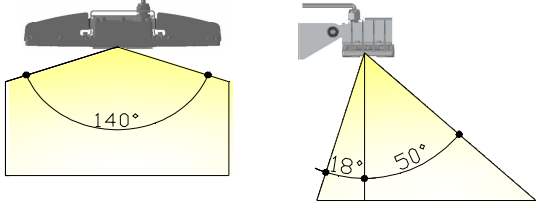
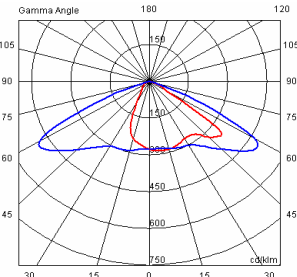
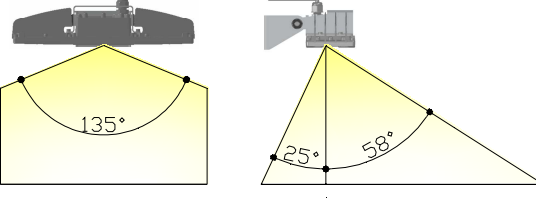
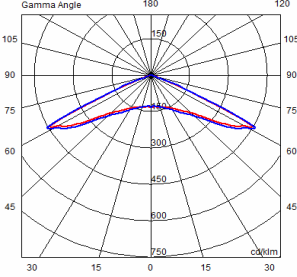
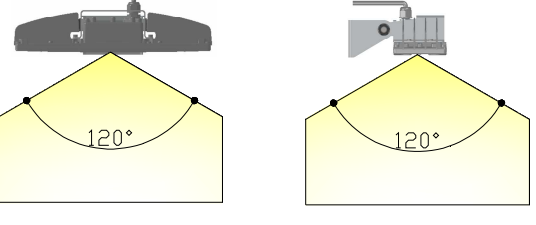
- 2.8 Power input:** 12Vdc & 24Vdc.
- 2.9 Light efficiency:** 72 lm/W (6000K), 46 lm/W (3000K)
- 2.10 LEDs:** 24ea High Power LED
- 2.11 Power consumption:** 36 W

3. Optical Performance:

Model number	Total Power	Color temp	Output Lumens
MP-61M51B	36W	6000K	2600 lm
MP-31M51B	36W	3000K	1670 lm
MP-62M51B	36W	6000K	2600 lm
MP-32M51B	36W	3000K	1670 lm
MP-62S51B	36W	6000K	2600 lm
MP-32S51B	36W	3000K	1670 lm
MP-65S51B	36W	6000K	2600 lm
MP-35S51B	36W	3000K	1670 lm

SPECIFICATION

4/7

Model Number	Light Distribution	Beam Pattern	Beam Angle($2\theta_{1/2}$)
MP-61M51B MP-31M51B	Symmetric Wide Flood		$145^\circ \times 73^\circ$ 
MP-62M51B MP-32M51B	Asymmetric Wide Flood		$140^\circ \times 68^\circ$ 
MP-62S51B MP-32S51B	Asymmetric Wide Flood		$135^\circ \times 83^\circ$ 
MP-65S51B MP-35S51B	Symmetric Wide Flood		120° 

SPECIFICATION

5/7

4. Safety warning

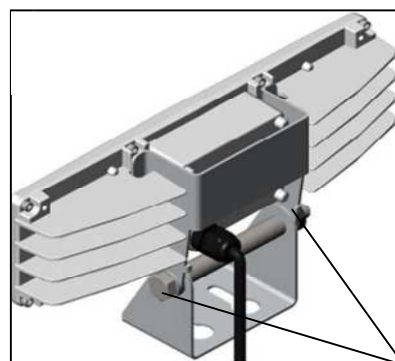
- Make sure the power is turned off before installation.
- Be ready for all safety measures while working in height.
- Make sure the metal screws have 100% fixed luminaire.
- Check all the product facilities are equipped well and has no safety doubt.

5. Installation Guide

1. Use M8 metal screws to fix the holder of luminaire.
2. Release the screw of shaft , adjust angle of luminaire , and then fix the shaft.
3. Correctly connect the power cables of luminaire output and external power supply (Adapter or Battery).
4. After wires are connected completely, wrap the waterproof tape.



Metal screw
Fig. 1
Fix Holder



Screw of shaft
Fig. 2
Release-Adjust-Fix

SPECIFICATION

6/7

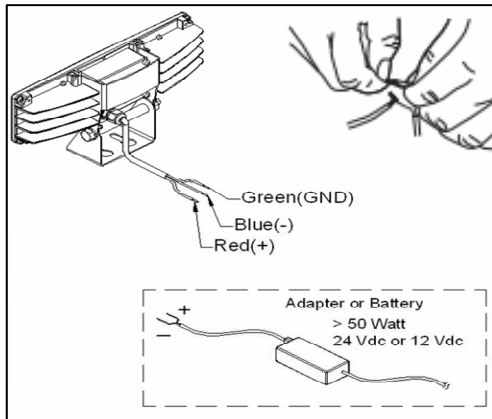


Fig. 3
Connection

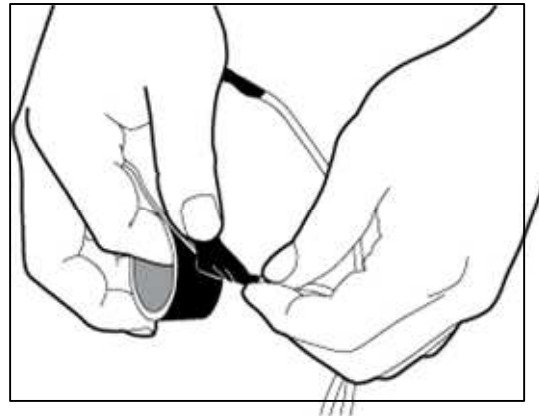


Fig. 4
Wrap waterproof tape

6. Operation manual:

- Do not supply the voltage ,which is higher than 24 Vdc.
- Please use with power supply which is over or equal 50 W
- The product is only for IP65 grade, so do not operate it under water.
Since the water will leak into luminaire, which will damage the LED and driver.

7.Packaging Information

Packaging unit Pieces/ Unit	Dimensions in (H x W x L)	Gross weight
Shipping carton box (contains 4 Piece)	632x383x220	10kg

SPECIFICATION

7/7

8. Reliability testing:

Item	Criteria	Test Result
Thermal Cycle Test	-20°C/15min ; 65°C/15min Within 5min, 100cycle	PASS
High Temperature Storage Test	80±2°C for 168hrs	PASS
Low Temperature Storage Test	-30±2°C for 168hrs	PASS
Low Temperature start lighten Test	-30±2°C, start lighten	PASS
High Temperature /Humidity Test	65°C/85%RH for 168hrs	PASS
Operating Testing	50±2°C for 168hrs	PASS
ON/OFF Test	15min/ON ; 15min/OFF 100 cycle	PASS
Waterproof Test	IP65 Waterproof Rank	PASS