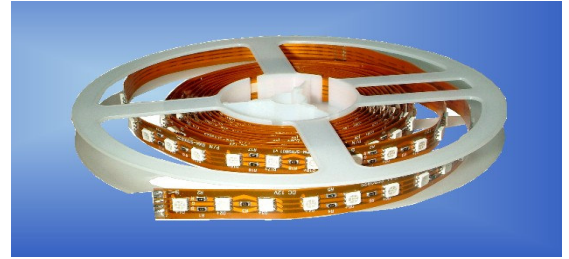


DESCRIPTION

RGB Flexstrip Light is high brightness RGB SMD LED mounted on FPC. Each LED contains red, green, blue color.

Bright View provides full color spectrum controller and please refer to the specifications of BVM-FSCC and BVC-P Series Transformer which are UL, CE and CB certified.

**FEATURES**

Module FPC with 216 SMD LEDs

Product Size (LxWXH) : 3240mm x 12.9mm x 2.4mm(with 216pcs RGB LED per reel)

Product Size (LxWXH) : 3240mm x 12.9mm x 2.8mm(with adhesive-tape back)

Smallest unit(135mm) of 9 RGB LEDs can be cut at mark place

Continuous length flexible LED light strips

Low power consumption, high intensity

Runs on DC 12 volt power supply

Optionally provided with adhesive-tape back at temperature rang -30°C to 200°C

BVM-SFRGB2S-T:("-T" with adhesive-tape back)

Lead (Pb) free, and Rohs complaint

APPLICATIONS

Amusement park & theater mood lighting

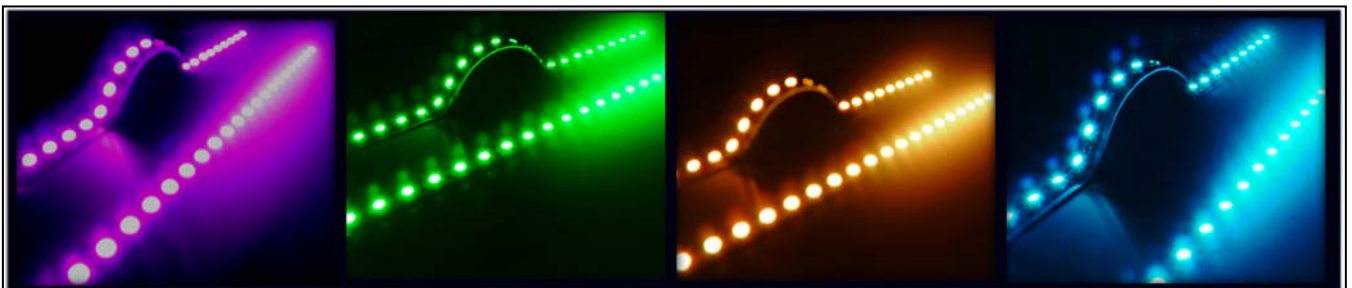
Architectural decorative lighting

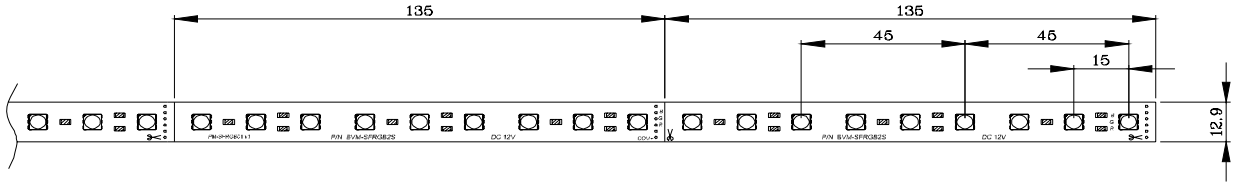
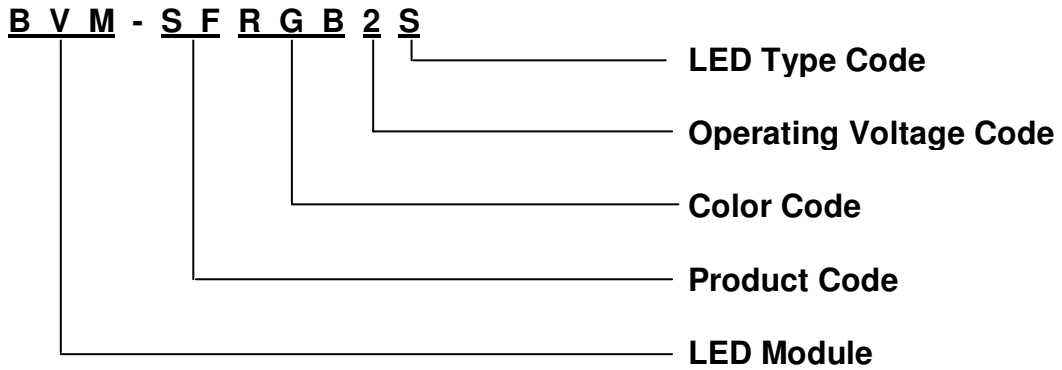
Backlighting for signage letters

Auditorium walkway lighting

Stairway accent lighting

Hallway lighting



■ PRODUCT DIMENSION

■ PART NUMBERING SYSTEM


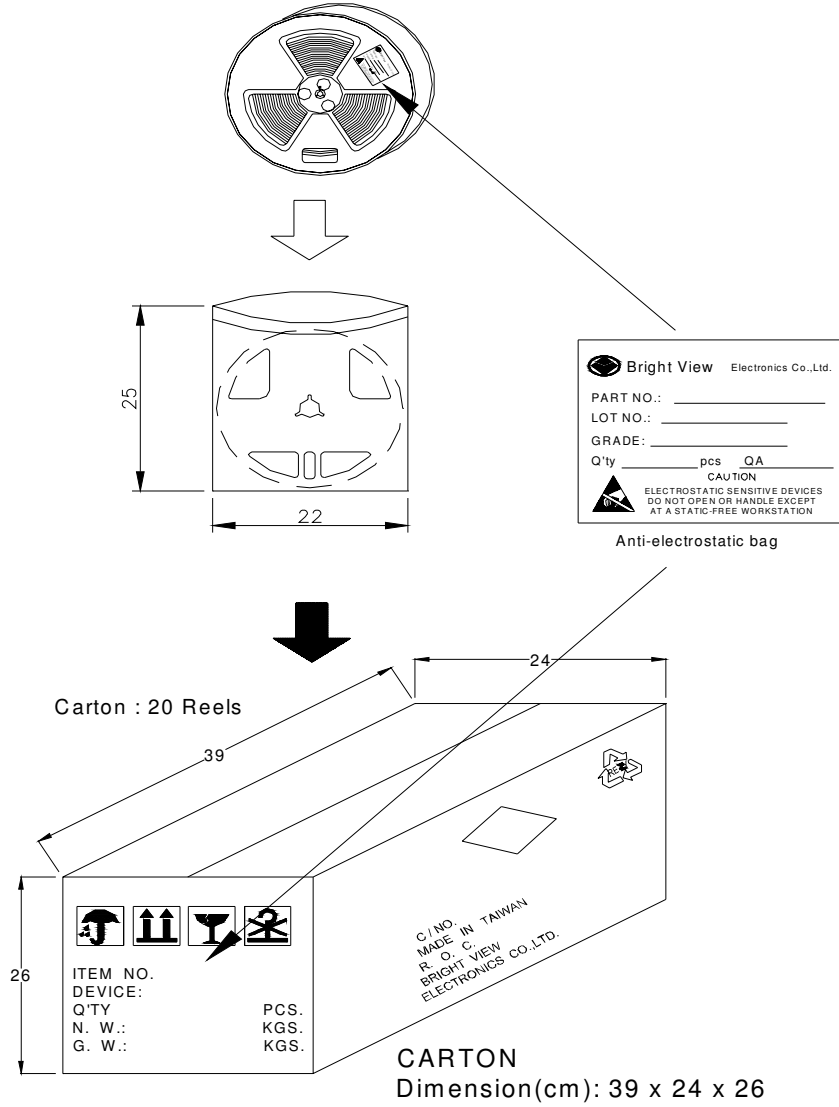
■ ABSOLUTE MAXIMUM RATINGS AT Ta = 25 °C

PARAMETER	BVM-SFRGB2S
Operating Voltage	12V
Max. Operating Voltage	13V
Power Dissipation/Unit	3.0W
Power Dissipation/Reel	72W
Luminous Intensity Matching Ratio	1.5 : 1
Operating Temperature Range	-30 °C to +50 °C
Storage Temperature Range	-30 °C to +85 °C

■ ELECTRICAL / OPTICAL CHARACTERISTICS at Vin = 12V DC Ta = 25 °C

SYMBOL	PARAMETER	BVM-SFRGB2S			Unit
		Red	Green	Blue	
	Light Color	Red	Green	Blue	
λ_p	Peak Emission Wavelength	635	518	467	nm
λ_d	Dominant Wavelength	625	525	475	nm
2 θ 1/2	LED Viewing Angle	110	110	110	deg
I	Operating Current/Unit	60	60	60	mA
I	Operating Current/Reel	1.4	1.4	1.4	A
Φ	Luminous flux/Unit (Typ.)	20.7	30.6	5.9	lm
Φ	Luminous flux/Reel (Typ.)	497	734.0	142.0	lm

PACKING



■ CAUTIONS

1. Bright View Electronics reserves the rights to modify specifications and remove availability of products at any time without notice.
2. Solder connection should only be performed on designated solder pads (marked +/-). During soldering, do not exceed the maximum soldering time of 10 seconds and the maximum soldering temperature of 260°C.
3. Correct electrical polarity needs to be observed. Inadequate polarity may cause the destroy of the LED module.
4. In addition to other specific application concerns and local safety codes, following basic safety features are required when using power supply:
 - . overload protection
 - . short circuit protection
 - . over heat protection
 - . correct output voltage, including consideration for ripple and spikes
5. Make sure that the power supply has enough power to operate the total load.
6. When mounting on metallic, it requires the electrical isolation between module and mounting surface.
7. Customer's desired lengths of minimum 135mm and its multiple can be made by breaking at the cutting mark of FPC.
8. The FPC (No. BVM-SFRGB2S) can be operated at maximum current of 2A.
9. This product is not waterproof and precaution should be taken to keep from exposure to moisture.